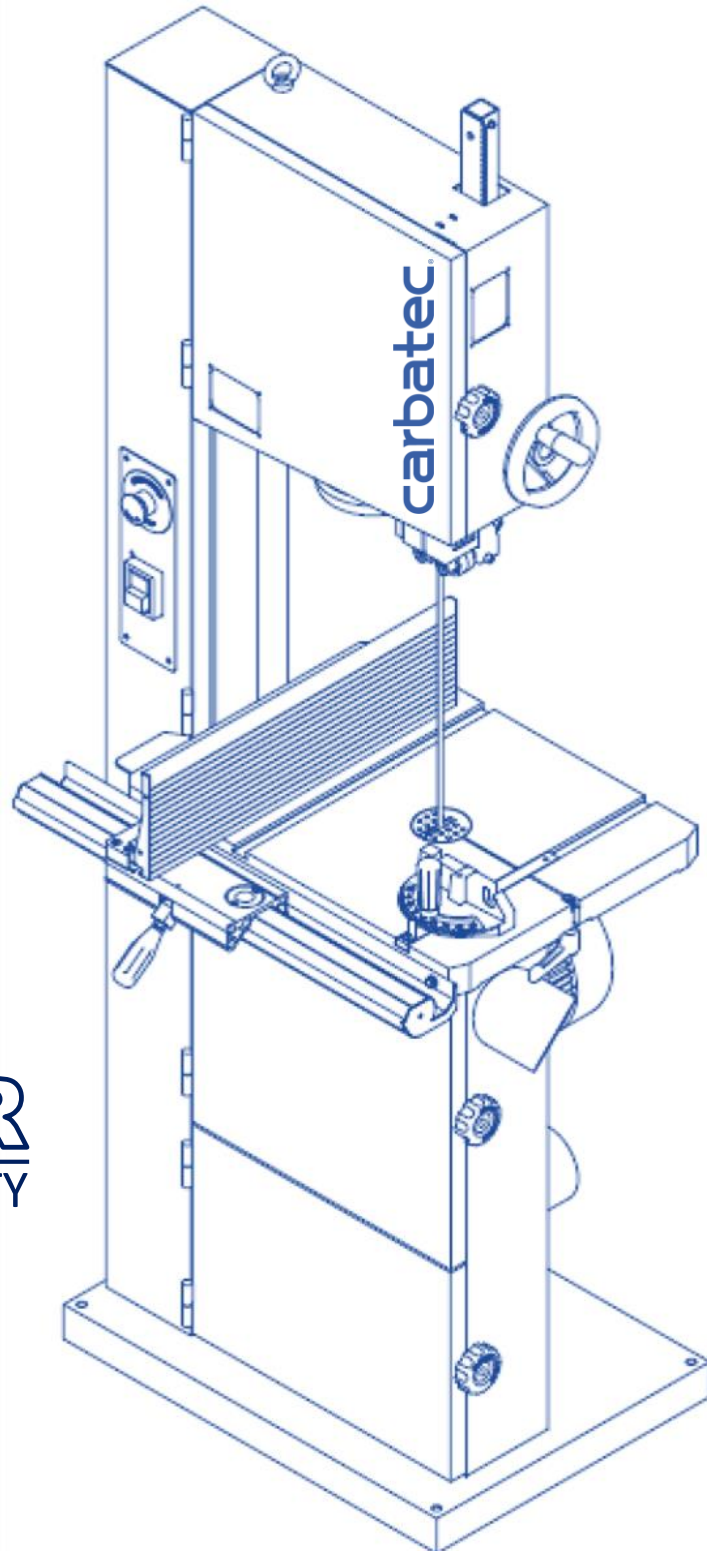


carbatec



3YR
WARRANTY

OWNERS MANUAL

PROFESSIONAL 2250W - 345MM BANDSAW

BS-X3453C

TABLE OF CONTENT

| | |
|---|----|
| 1. SPECIFICATIONS | 1 |
| 2. WARNINGS | 2 |
| 3. SAFETY INSTRUCTION FOR MACHINERY | 3 |
| 4. IDENTIFICATION | 4 |
| FRONT SIDE OF BAND SAW | 4 |
| REAR OF BAND SAW | 5 |
| 5. OPERATING INSTRUCTION | 6 |
| LIFTING AND PLACING | 6 |
| ASSEMBLING | 6 |
| ADJUSTING 90 DEGREE TABLE STOP | 6 |
| ASSEMBLING RIP FENCE | 7 |
| CHANGING BLADES | 7 |
| ADJUSTING THE TENSION OF BLADE | 7 |
| ADJUSTING UPPER BLADE GUIDE ASSEMBLY | 8 |
| DUST COLLECTION | 8 |
| SETTING THE CUTTING HEIGHT | 8 |
| TABLE PARALLEL ADJUSTMENT | 9 |
| MITER GAUGE ADJUSTMENT | 10 |
| SAFETY DEVICE | 10 |
| 6. PARTS LIST | 11 |
| 7. WIRING DIAGRAM | 27 |

FEATURES:

The 14”(355mm) bandsaw is a well designed industrial machine that provide variety of wood work functions to meet your higher need of a bandsaw. Followings are the basic functions you will find in this machine:

1. *Quick Changed Saw Blade System* gives you an easy way to replace saw blade to cut different quality wood materials.
2. *Adjustable Rip Fence* can assist you to cut desired shapes.
3. *Accurate Miter Gauge* can let you create any curves you desire.
4. *Effective Ball Bearing Guide System* will let the band saw blade run smoother.
5. *Humanized Dust Chutes* collect extra wood-chips and give you a better working environment.
6. *Extended 14” Height Space* provides you a bigger working space to cut wider and higher wood selections.

1. SPECIFICATIONS

| | |
|-------------------------------|------------------------------|
| Horse Power | 3HP |
| Power Requirement | 230V, 1PH, 50HZ |
| Switch | CE and Emergency Stop Switch |
| Cutting Height | 14"(355mm) |
| Max. Cutting Width | 13-1/2"(340mm) |
| Max. Cutting (with Rip Fence) | 12"(300mm) |
| Saw Blade (L) | 121.2"/3078mm |
| Saw Blade (W) | 1/8" to 3/4" (Standard 3/8") |
| Saw Blade Speed | 655 M/min. |
| Table Size | 21-3/4" x 16-1/8"(550x410mm) |
| Table Tilting | Left-5° / Right-45° |
| Wheel Size | 14"(355mm) |
| Table Height From Ground | 37"(940mm) |
| Dust Chute Diameter | φ 4" x 2 |
| Braking System | Electronic Brake |
| N.W./G.W. | 149 / 178 KGS |
| Appearance | 730 x 825 x 1920 mm |
| Packing Size (L x W x H) | 760 x 625 x 2005mm |

2. WARNINGS



WARNING

- Misuse of this machine can cause serious injury.
- For safety, machine must be set up, used and serviced properly.
- Read, understand and follow instructions in the operator and parts manual which was shipped with your machine.

When setting up machine:

- Always avoid using machine in damp or poorly lighted work areas.
- Always be sure machine is securely anchored to the floor.
- Always keep machine guards in place.
- Always put start switch in "OFF" position before plugging in machine.

When using machine:

- Never operate with machine guards missing.
- Always wear safety glasses with side shields.
- Never wear loose clothing or jewelry.
- Never overreach - you may slip and fall into the machine.

- Never leave machine running while you are away from it.
- Always shut off the machine when not in use.

When servicing machine:

- Always unplug machine from electrical power while servicing.
- Always follow instructions in operators and parts manual when changing accessory tools or parts.

You - the stationary power tool user - hold the key to safety.

Read and follow these simple rules for best results and full benefits from your machine. Use properly, this machine is among the best in design and safety. However, any machine used improperly can be rendered inefficient and unsafe. It is absolutely mandatory that those who use our products be properly trained in how to use them correctly. Should read and understand the Operators and Parts Manual as well as all labels affixed to the machine. Failure in following of these warnings can cause serious injuries

MAHINERY GENERAL SAFETY WARNINGS

1. Always wear protective eye wear when operating machinery. Eye wear shall be impact resistant, protective safety glasses with side shields. Not using eye wear which could result in severe injury from breakage of eye protection.
2. Wear proper apparel. No loose clothing or jewelry which can get caught in moving parts. Rubber soled footwear is recommended for best footing.
3. Do not overreach. Failure to maintain proper working position can cause you to fall into the machine or cause your clothing to get caught - pulling you into the machine.
4. Keep guards in place and in proper working order. Do not operate the machine with guards removed.
5. Avoid dangerous working environments. Do not use stationary machine tools in wet or damp locations. Keep work areas clean and well lit. Special electrics should be used when working on flammable materials.
6. Avoid accidental starts by being sure the start switch is "OFF" before plugging in the machine.
7. Never leave the machine running while unattended. Machine shall be shut off whenever it is not in operation.
8. Disconnect electrical power before servicing. Whenever changing accessories or general maintenance is done on the machine, electrical power to the machine must be disconnected before work is done.
9. Maintain all machine tools with care. Follow all maintenance instructions for lubricating and the changing of accessories. No attempt shall be made to modify or have makeshift repairs done to the machine. This not only voids the warranty but also renders the machine unsafe.
10. Machinery must be anchored to the floor.
11. Secure work. Use clamps or a vise to hold work, when practical. It is safer than using your hands and it frees both hands to operate the machine.
12. Never brush away chips while the machine is in operation.
13. Keep work area clean. Cluttered area invite accidents.
14. Remove adjusting keys and wrenches before turning machine on.
15. Use the right tool. Don't force a tool or attachment to do a job it was not designed for.
16. Use only recommended accessories and follow manufacturer's instructions pertaining to them.
17. Keep hands in sight and clear of all moving parts and cutting surfaces.
18. All visitors should be kept at a safe distance from the work area. Make workshop completely safe by using padlocks, master switches, or by removing starter keys.
19. Know the tool you are using - its application limitations, and potential hazard.

GENERAL ELECTRICAL CAUTIONS

This saw should be grounded in accordance with the National Electrical Code and local codes and ordinances. This work should be done by a qualified electrician. The saw should be grounded to protect the user from electrical shock.

Caution: For circuits which are far away from the electrical service box, the wire size must be increased in order to deliver ample voltage to the motor. To minimize power losses and to prevent motor overheating and burnout, the use of wire sizes for branch circuits or electrical extension cords according to the following table is recommended.

3. SAFETY INSTRUCTION FOR MACHINERY

| | |
|--|---|
| <ol style="list-style-type: none"> 1. Always wear leather gloves when handling saw blade. The operator shall not wear gloves when operating the machine. 2. All doors shall be closed, all panels replaced, and other safety guards in place prior to the machine being started or operated. 3. Be sure that the blades are not contact with the workpiece when the motor is started. The motor shall be started and you should allow the saw to come up to full speed before bringing the saw blade into contact with the workpiece. 4. Keep hands away from the blade area. See Figure A. 5. Remove any cut off piece carefully while keeping your hands free of the blade area. 6. Saw must be stopped and electrical supply must be cut off before any blade replacement or adjustment of blade support mechanism is done, or before any attempt is made to change the drive belts or before any periodic service or maintenance is performed on the saw. 7. Remove loose performed on the unnecessary workpieces from area before starting machine. 8. Bring adjustable saw guides and guards as close as possible to the workpiece. | <ol style="list-style-type: none"> 9. Always wear protective eye wear when operating, servicing, or adjusting machinery. Eyewear shall be impact resistant, protective safety glasses with side shields. Not using eye wear which could result in severe injury from breakage of eye protection. See Figure B. 10. Non-slip footwear and safety shoes are recommended. See Figure C. 11. Wear ear protectors (plugs or muffs) during extended periods of operation. See Figure D. 12. Wear mask to operate machine. See Figure E. 13. Do not smoke during operating machine. See Figure F. 14. The workpiece, or part being sawed, must be securely clamped before the saw blade enters the workpiece. 15. Remove cut off pieces carefully, keeping hands away from saw blade. 16. Saw must be stopped and electrical supply cut off or machine unplugged before reaching into cutting area. 17. Avoid contact with coolant, especially guarding your eyes. |
|--|---|



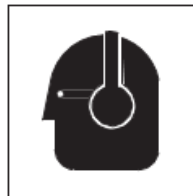
A



B



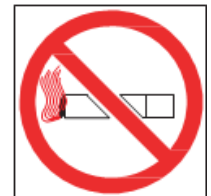
C



D



E



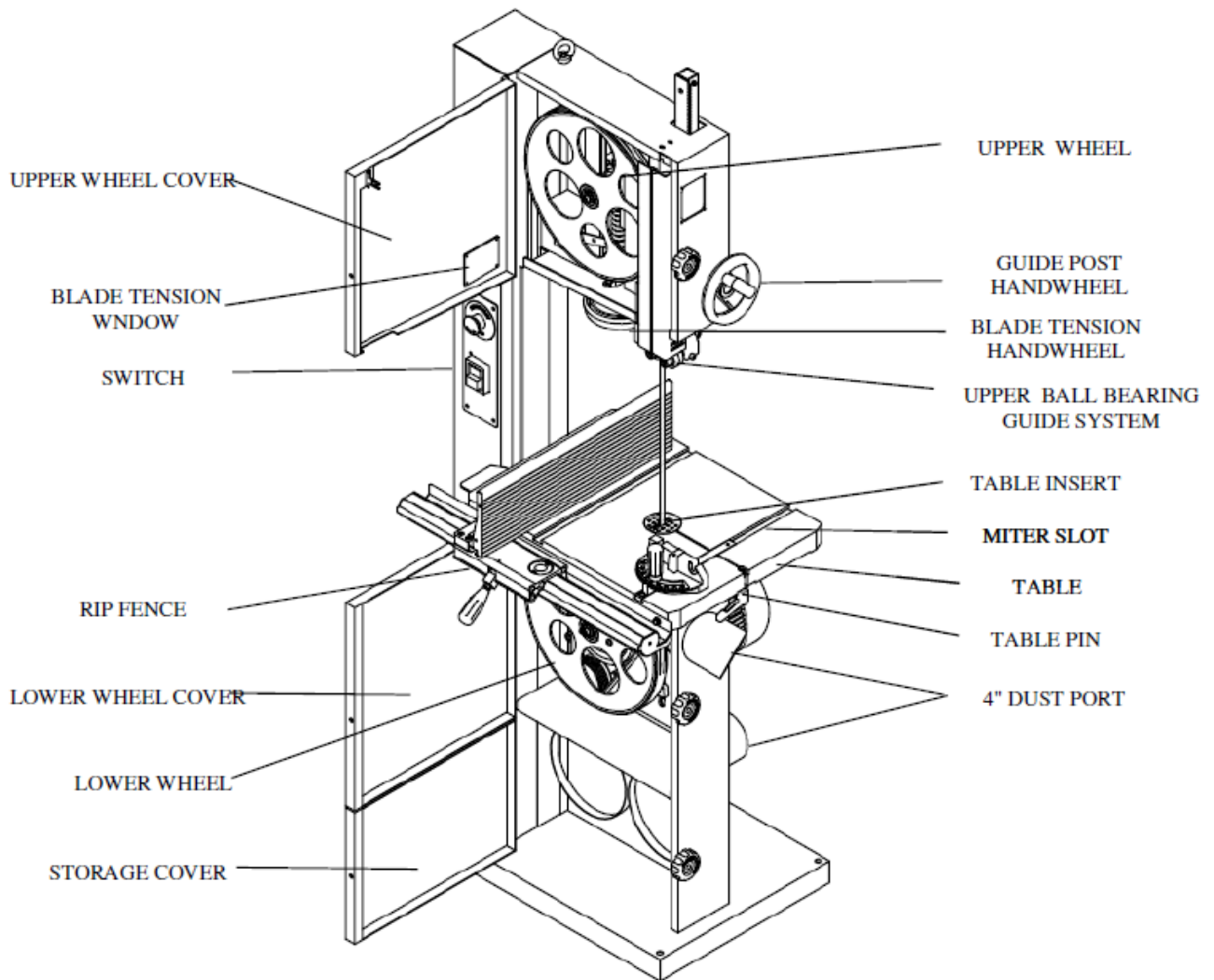
F

4. IDENTIFICATION

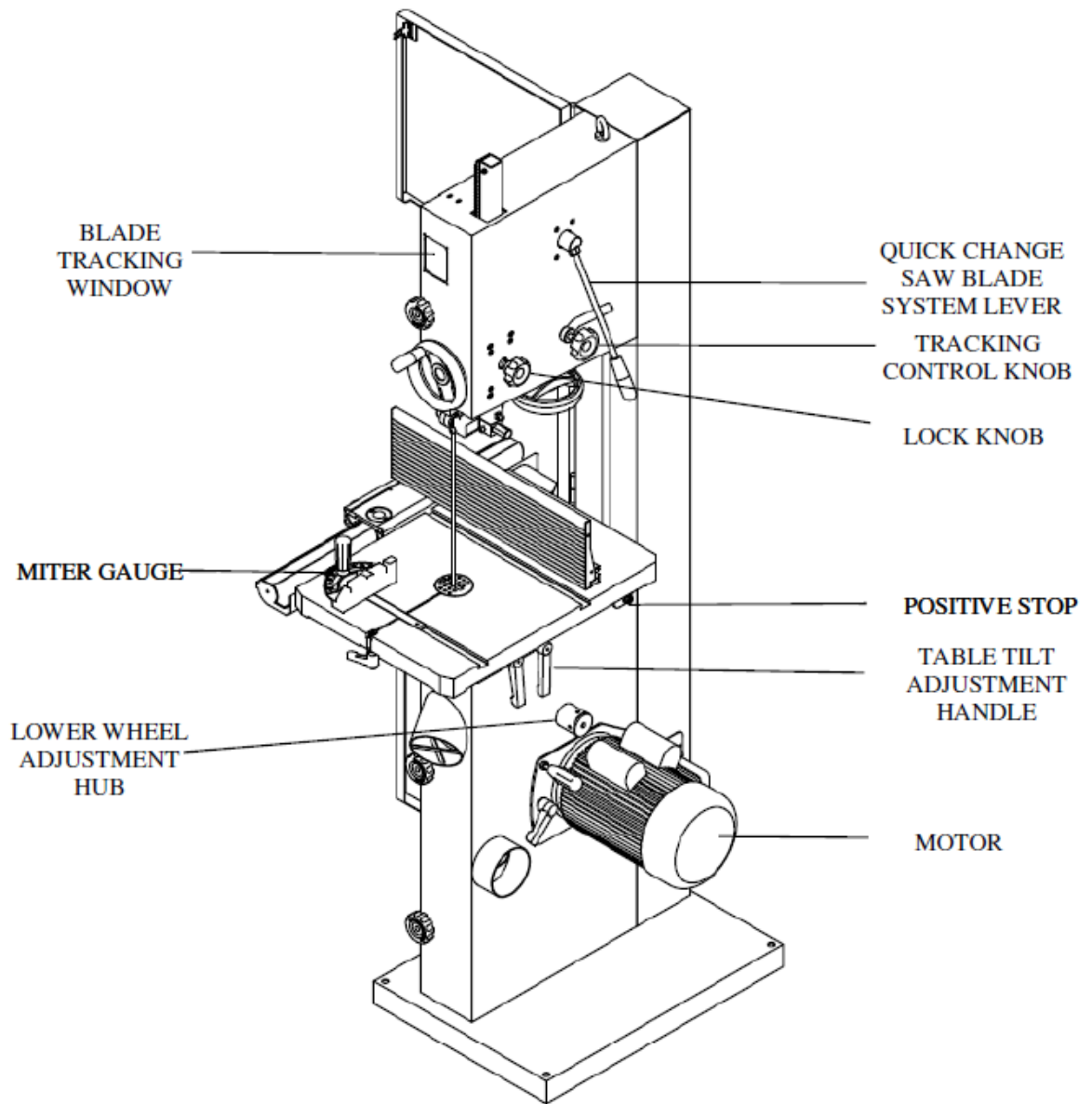
Throughout this document, we make reference to various systems and components on the saw. The two illustrations on these pages will provide you with an overall frame of reference for the location and position of the various components.

Where detailed illustrations for various subsystems will be helpful, you will find these illustrations accompanying the specific test for each subsystem and its components.

FRONT SIDE OF BAND SAW



REAR OF BAND SAW



5. OPERATING INSTRUCTION

LIFTING AND PLACING

1. Place lifting hook through eye bolt. (see Figure 1)
2. Use a 2,000KGS wrecker to hang up the machine to suitable place.
3. To ensure the safety and sufficient upright stability of the machine, you need to bolt the machine to floor on M10 screw.

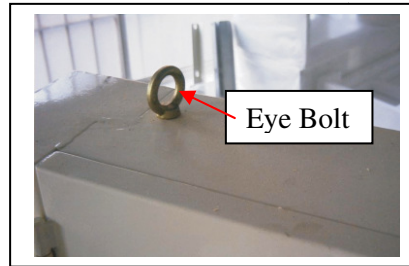


Figure 1

ASSEMBLING

1. Attach the hand wheel (see Figure 2) to the machine.
2. Slide the table slot to the saw blade and slowly move to the center of the table. Adjust the table until the saw blade is in the center of table insert.
3. Install table insert. Then, install table gap screw assembly, secure with (1) M8 nut, (2) M8 flat washer and tighten gap screw. (see Figure 3)
4. Make sure the table is in the center. Then, secure table to trunnion. Please use (1) M8 flat washer (2) M8 spring washer, and (3) M8x25 hex head bolt to secure. (see Figure 4)

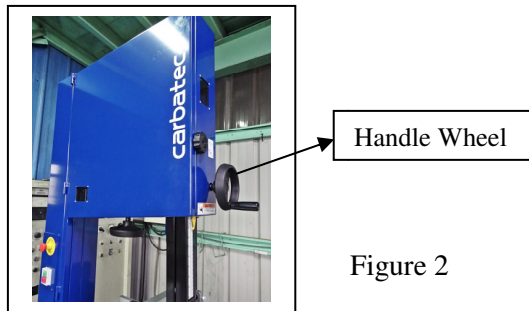


Figure 2

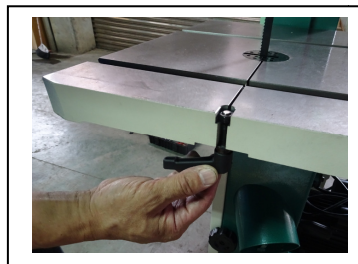


Figure 3



Figure 4

ADJUSTING 90 DEGREE TABLE STOP

1. Loosen the lock knobs (see Figure 4) and tilting table left until it rests against table stop bolt M8.
2. Using positive stop allows you to quickly return the table to 0 from a right-tilt setting and allows for calibration. Please tilt table to approximately 10° right-tilt. (see Figure 6) Then, rotate positive stop to up position. Finally, tilt table down until it rests on positive stop and then tighten table tilt lock lever.

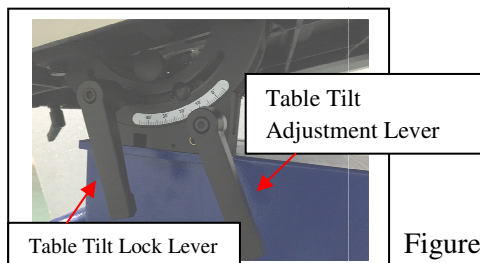


Figure 5

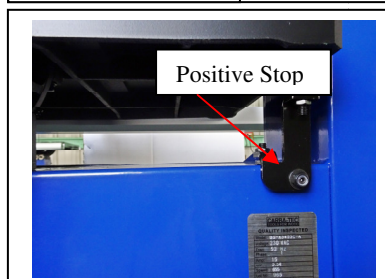
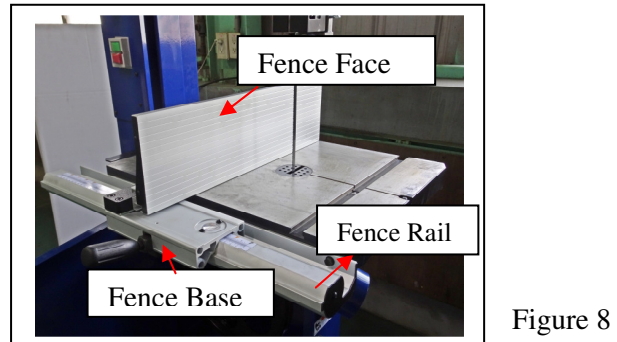
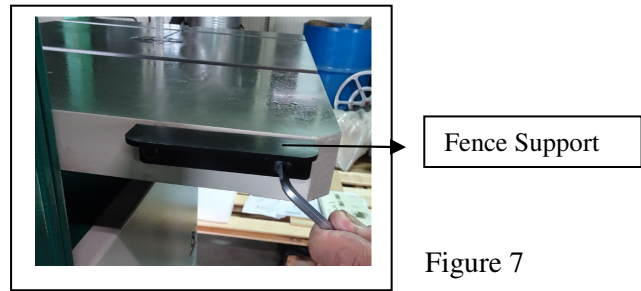


Figure 6

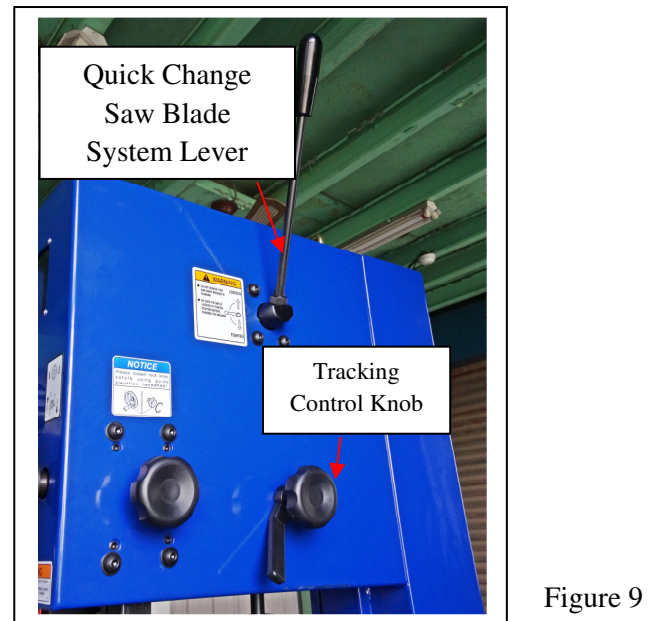
ASSEMBLING RIP FENCE

1. Install fence support. Use (1)M6 flat washer and (2) M6 hex socket bolt.(see Figure 7)
2. Install the fence rail to the table. Use (1) two M6 spring washers (2) two M6 hex head bolts (3) two M6 flat washers.(see Figure 8)
3. Place fence base on fence rail. Slide the fence on its guides until it is the required distance from the blade. Push lock lever down to secure fence in place.(see Figure 8)
4. Fix the fence face to the fence base.(see Figure 8)
5. Check the scale. Make sure the distance between the edge of the miter slot and both front and rear of the rip fence. Adjust to let both distances equal.



CHANGING BLADES

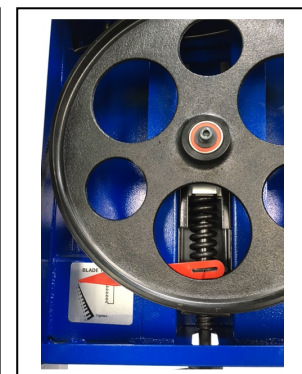
1. Unplug power cord.
2. Remove the table insert and table pin.
3. Open upper and lower wheel cover.
4. Loosen the upper and lower blade guide system and bearing.
5. Loosen quick change saw blade system lever on rear of bandsaw.(see Figure 9)
6. Remove the blade and guide new blade through table slot. Place blade in upper and lower ball bearing guides system.
7. Replace blade in the MIDDLE of the upper and lower wheel. If the blade is not in the right position, you must relax the fixed handle and adjust the tracking control knob.(see Figure 9)
8. Replace the table insert and table pin.
9. Adjust the blade tension and blade tracking if the blade width is different.



ADJUSTING THE TENSION OF BLADE

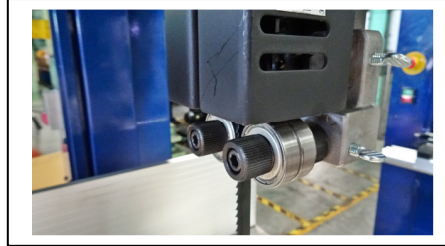
Blade tension is set by a spring loaded tension mechanism on the upper wheel. Check the level of the tension device before cutting. The tension for various blade widths as indicated on the window of upper wheel cover.

Turn the blade tension hand wheel (see Figure 10) and see the saw tension instruction (see Figure 11) indicated on the window of upper wheel cover.

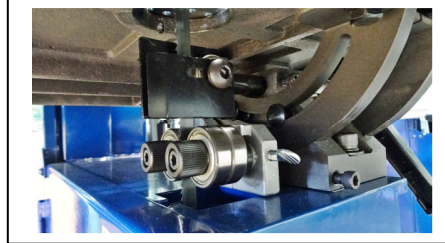


ADJUSTING UPPER BLADE GUIDE ASSEMBLY

1. Set the bearing of upper and lower blade guide within approx. 0.5mm of the blade. Make sure the bearing and the back of the blade approx. 0.5mm. (see Figure 12 and Figure 13)
2. Do not set the bearing too close. The friction generates heat, which may have an adverse effect on the bearings and the saw blade.



12



13

DUST COLLECTION

The band saw is recommended to be connected to dust collect. There are two 4" dust ports (see Figure 14) to attach with 4" steel clamping.



Figure 14

SETTING THE CUTTING HEIGHT

The upper blade guide should always be set as close practical against the work. To adjust, loosen the hand wheel (see Figure 15) at the side of housing and see the blade guide to the required height. Then, tighten after setting.



Figure 15

TABLE PARALLEL ADJUSTMENT

1. Insert table pin into the table groove.(Figure 16)

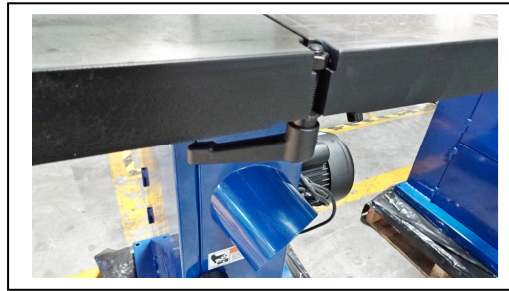


Figure 16

2. Use the ruler gauge to put it on the table. (Figure 17) Adjust the position of table pin (adjust the depth of the pin) and adjust the parallel of the table by using the feller gauge. Tolerance for the table parallel is within 0.4mm.

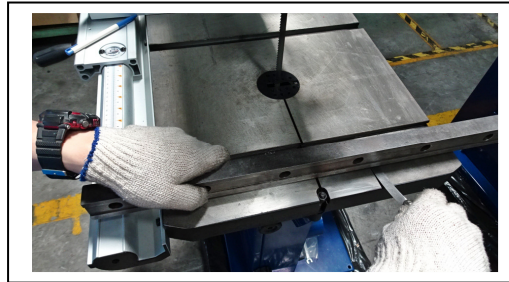


Figure 17

3. When adjusting the table, the table edge can higher than the middle position about 0.4mm which is acceptable. (Figure 18& Figure 19) Edge can not lower than the middle part of the table.

Note: Insert the table pin deeper, the middle part of the table will be lower.



Figure 18

4. Follow above steps to finish the table parallel adjustment.



Figure 19

Trouble Shooting:

If the table pin gets stuck, it's because you push it too deep. Use a round bar $\varnothing 5\text{mm} \sim \varnothing 8\text{mm}$ and a soft hammer to knock the table pin out from inside of the table. Please be aware of your fingers!

MITER GAUGE ADJUSTMENT

1. Place the miter gauge in the table slot.
2. Loosen the clamp screw on the miter gauge.
3. Adjust the desired angle of cutting on the miter gauge.
4. Tighten the clamp screw. (see Figure 20)

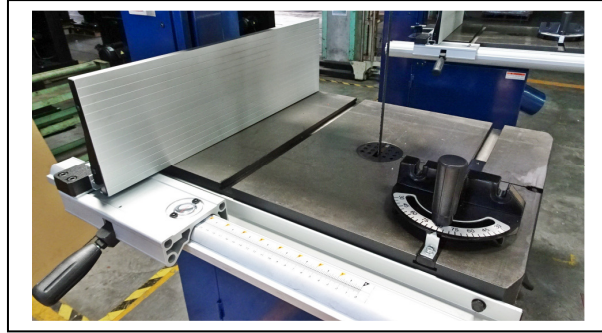


Figure 20

SAFETY DEVICE

1. Limit switch (see Figure 21) inside the machine body for cutting off the power while door opening during operation.



Figure 21

2. The emergency stop (see Figure 22) can help you stop the machine immediately once dangerous situation happens.



Figure 22

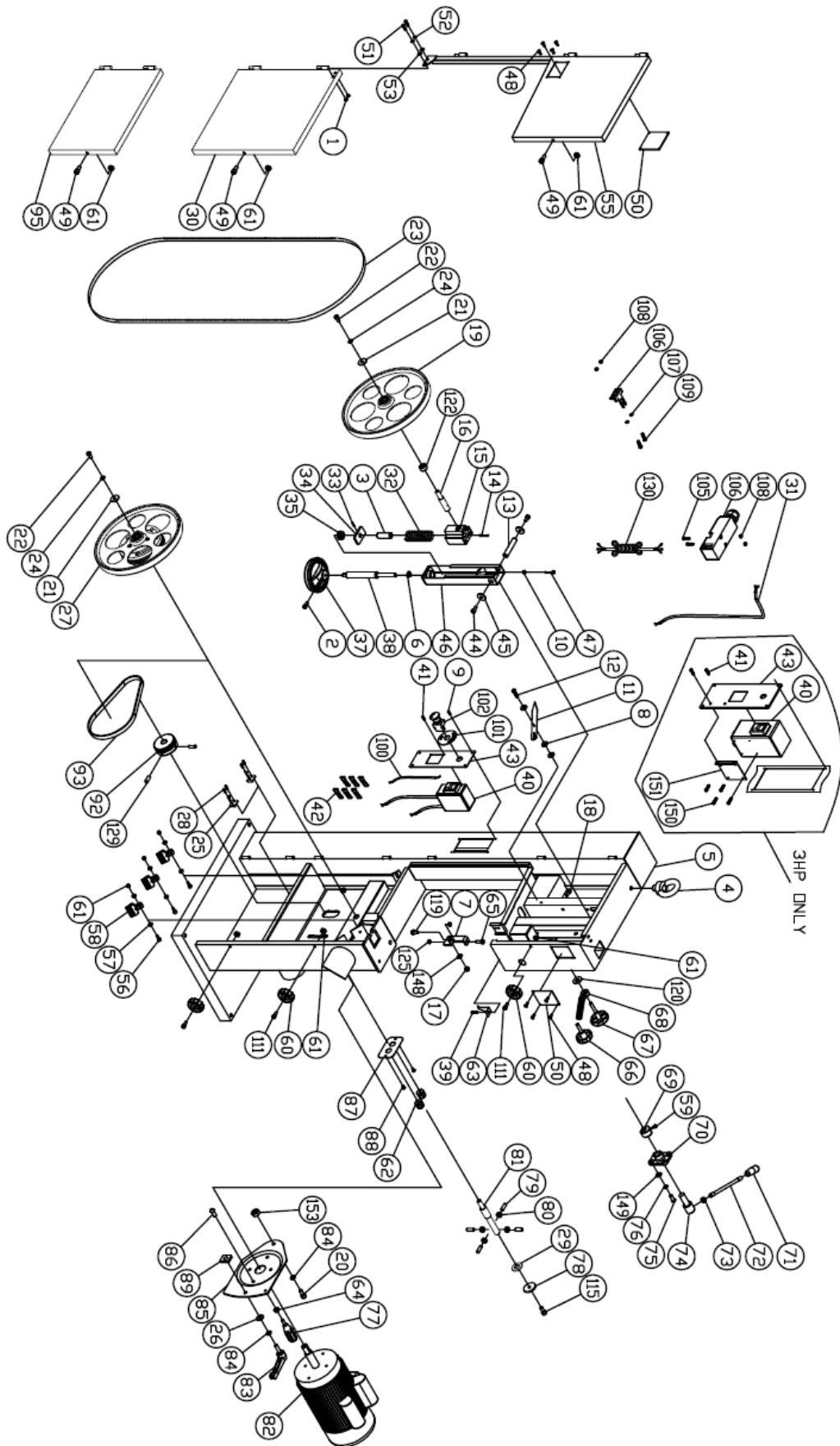
REMINDER

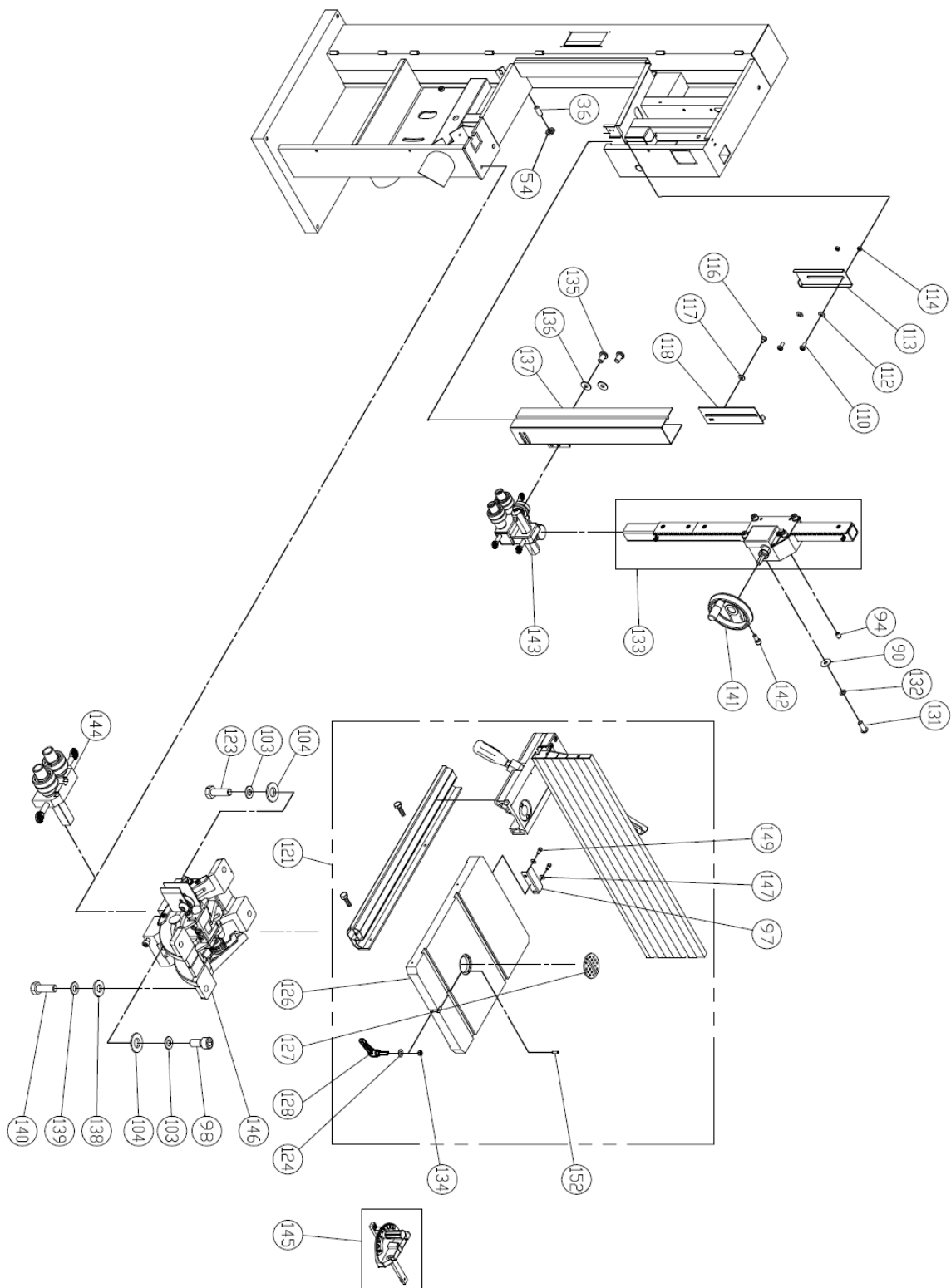
Once completing assembly, please test run the machine to ensure it is properly connected to power and safety components are functioning correctly.

If you find an unusual problem during the test run, please stop the machine immediately. Disconnect the machine from power and fix the problem before operating the machine again.

6. PARTS LIST

MODEL NO. SBW-3501H1





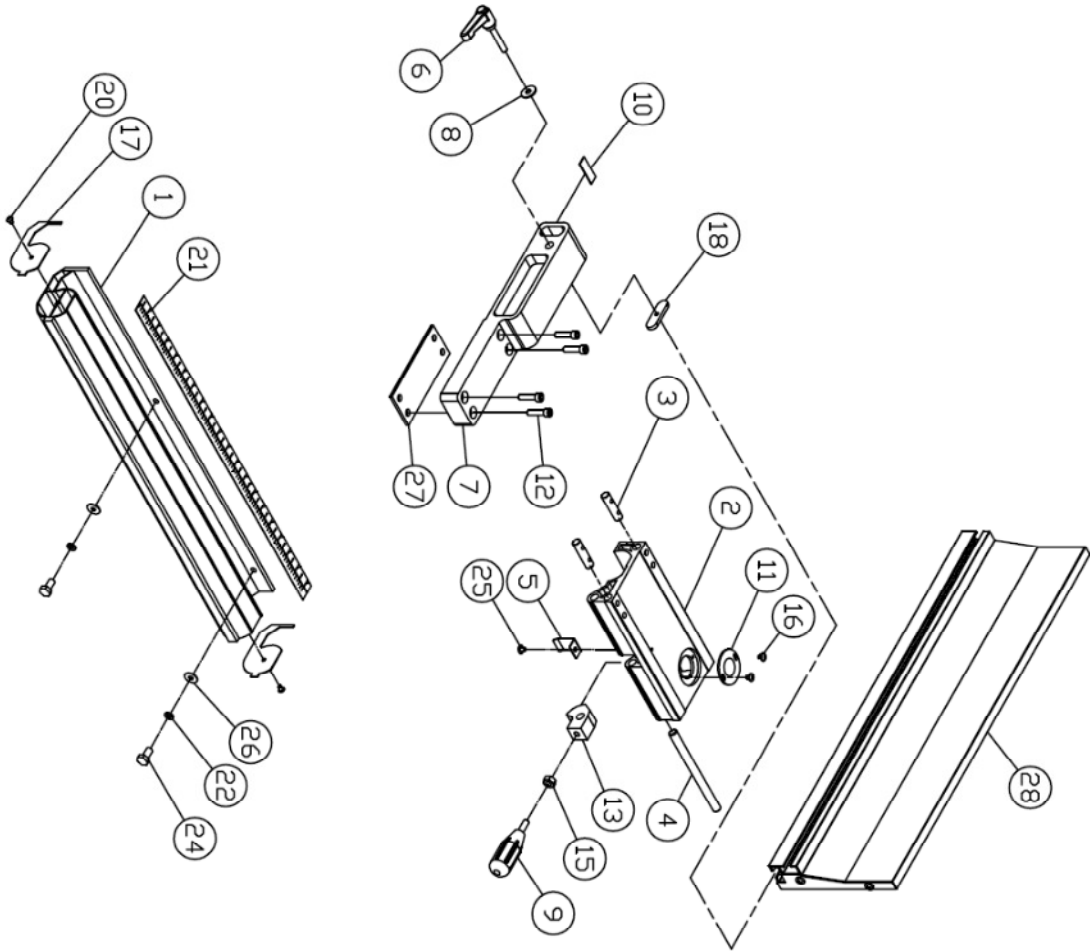
| ITEM | PART NO. | PARTS NAME | SIZE | Q'TY | NOTE |
|------|----------|-------------------------|--------------------|------|------|
| 1 | NF050800 | NUT | M5 | 2 | |
| 2 | SR060400 | HEX SOCKET BOLT | M6x20 | 1 | |
| 3 | 135067 | BUSHING | | 1 | |
| 4 | 995101 | RING | M10 | 1 | |
| 5 | 130470 | MACHINE BODY | | 1 | 2HP |
| | 130475 | MACHINE BODY | | 1 | 3HP |
| 6 | RE150000 | RETAINING RING(E) | E15 | 1 | |
| 7 | 135529 | TABEL SUPPORT PLATE | | 1 | |
| 8 | WF061310 | FLAT WASHER | M6xφ13 | 3 | |
| 9 | SF059200 | PAN HEAD BOLT W/FLANGE | M5x8 | 4 | |
| 10 | NH061000 | NUT | M6 | 1 | |
| 11 | 130378 | POINTER | | 1 | |
| 12 | 135073 | STEP SCREW | M4x5 | 1 | |
| 13 | 135012 | UPPER SHAFT | | 1 | |
| 14 | PS053600 | SPRING PIN | φ5x36 | 1 | |
| 15 | 135017 | UPPER WHEEL SHAFT HINGE | | 1 | |
| 16 | 130458 | UPPER WHEEL SHAFT | | 1 | |
| 17 | NL081300 | NYLON NUT | M8 | 1 | |
| 18 | SR069300 | HEX SOCKET BOLT | M6x12 | 1 | |
| 19 | AB130466 | UPPER WHEEL ASM | φ14" | 1 | |
| 20 | SR100700 | HEX HEAD BOLT | M10x35 | 1 | |
| 21 | WF082320 | FLAT WASHER | M8xφ23 | 2 | |
| 22 | SR089400 | HEX SOCKET BOLT | M8x16 | 2 | |
| 23 | 130479 | SAW BLADE | 3/8"x3079mmx0.65mm | 1 | |
| 24 | WS080000 | SPRING WASHER | M8 | 2 | |
| 25 | 170736 | SAW HOOK | | 2 | |
| 26 | WF102030 | FLAT WASHER | M10xψ20 | 1 | |
| 27 | AB130463 | LOWER WHEEL ASM | φ14" | 1 | |
| 28 | SP049200 | PAN HEAD BOLT | M4x8 | 4 | |
| 29 | 130462 | PLATE | | 1 | |
| 30 | 130472 | LOWER COVER | | 1 | |
| 31 | IC130363 | SWITCH CORD | 0.75x2Cx1.3M | 1 | |
| 32 | 135032 | SPRING | | 1 | |
| 33 | PS031600 | PIN | φ3x16 | 1 | |
| 34 | 135042 | LOCATE BLOCK | | 1 | |
| 35 | 994301 | BEARING | 51201 | 1 | |
| 36 | SS080600 | SET SCREW | M8x30 | 1 | |
| 37 | 135002 | HANDLE WHEEL | | 1 | |
| 38 | 130476 | ADJUSTING BOLT | | 1 | |
| 39 | SF059200 | PAN HEAD BOLT W/FLANGE | M5x8 | 1 | |
| 40 | 136017B | BRAKE SWITCH | 12A | 1 | 2HP |
| | 136017C | BRAKE SWITCH | 16A | 1 | 3HP |

| ITEM | PART NO. | PARTS NAME | SIZE | Q`TY | NOTE |
|------|----------|------------------------------|-------------|------|------|
| 41 | ST039304 | TAPPING SCREW | M3.5x12(AB) | 2 | 2HP |
| | SF059300 | PAN HEAD BOLT W/FLANGE | M5x12 | 2 | 3HP |
| 42 | 136019 | WIRE CONECTOR | 224-201 | 6 | |
| 43 | 130480 | SWITCH PLATE | | 1 | 2HP |
| | 130481 | SWITCH PLATE | | 1 | 3HP |
| 44 | SR089400 | HEX SOCKET BOLT | M8x16 | 2 | |
| 45 | WF083030 | FLAT WASHER | M8xφ30 | 2 | |
| 46 | 135016 | UPPER WHEEL SLDING BRACKET | | 1 | |
| 47 | SR061000 | HEX SOCKET BOLT | M6x50 | 1 | |
| 48 | BR000044 | RIVET | φ3.2x10 | 8 | |
| 49 | SR060200 | HEX SOCKET BOLT | M6x10 | 3 | |
| 50 | 135004 | LIMPID PIECE | | 2 | |
| 51 | SJ059400 | HEX SOCKET BOTTOM HEAR SCREW | M6x10 | 2 | |
| 52 | WS050000 | SPRING WASHER | M5 | 2 | |
| 53 | WF051210 | FLAT WASHER | M5xψ12 | 2 | |
| 54 | NL081300 | NYLON NUT | M8 | 1 | |
| 55 | 130471 | UPPER WHEEL COVER | | 1 | |
| 56 | SH060500 | HEX HEAD BOLT | M6x25 | 3 | |
| 57 | WF061310 | FLAT WASHER | M6xφ13 | 6 | |
| 58 | 135051 | BRUSH | | 3 | |
| 59 | SR060500 | HEX SOCKET BOLT | M6x25 | 1 | |
| 60 | 135041 | KNOB | | 3 | |
| 61 | NL061000 | NYLON NUT | M6 | 9 | |
| 62 | 136013 | STRAIN RELIEF | PG13.5 | 2 | |
| 63 | 135567 | HEIGHT POINTER | | 1 | |
| 64 | NH081300 | NUT | M8 | 1 | |
| 65 | SH080700 | HEX HEAD LOLT | M8x35 | 1 | |
| 66 | 135022 | KNOB SCREW | M10x20 | 1 | |
| 67 | 135020 | KNOB SCREW | M10x53 | 1 | |
| 68 | 135028 | LOCATE HANDLE | M10 | 1 | |
| 69 | 135030 | CAM | | 1 | |
| 70 | 135038 | LOCATE BLOCK | | 1 | |
| 71 | 620021 | KNOB | | 1 | |
| 72 | 620020 | LEVER ROD | | 1 | |
| 73 | NH121900 | NUT | M12 | 1 | |
| 74 | 135036 | SHAFT | | 1 | |
| 75 | SJ080400 | HEX SOCKET BOTTOM HEAD SCREW | M8x20 | 4 | |
| 76 | WS080000 | SPRING WASHER | M8 | 4 | |
| 77 | 198013 | HANDLE | M8 | 1 | |
| 78 | 130377 | PLATE | | 1 | |
| 79 | SS080400 | SET SCREW | M8x20 | 4 | |
| 80 | NH081300 | NUT | M8 | 4 | |

| ITEM | PART NO. | PARTS NAME | SIZE | Q'TY | NOTE |
|------|----------|------------------------------|----------------------|------|------|
| 81 | 130460 | LOWER WHEEL SHAFT | | 1 | |
| 82 | MH130470 | MOTOR | 1.5KW/230V/50Hz/1PH | 1 | |
| | MH130471 | MOTOR | 2.25KW/230V/50Hz/1PH | 1 | |
| 83 | 200426 | HANDLE | | 1 | |
| 84 | WS100000 | SPRING WASHER | M10 | 2 | |
| 85 | 135112 | MOTOR FIXED PLATE | | 1 | |
| 86 | SJ080400 | HEX SOCKET BOTTOM HEAD SCREW | M8x20 | 4 | |
| 87 | 135081 | PLATE | | 1 | |
| 88 | ST049210 | TAPPING SCREW | M4x8(B) | 2 | |
| 89 | 135065 | LOCATE BLOCK | | 1 | |
| 90 | WF081818 | FLAT WASHER | M8xφ18 | 4 | |
| 92 | 130355 | MOTOR PULLEY | | 1 | |
| 93 | LJ029090 | MULTI-GROOVE BELT | 290J9 | 1 | |
| 94 | SS089100 | SET SCREW | M8x6 | 4 | |
| 95 | 130453 | TOOL BOX COVER | | 1 | |
| 97 | 130474 | EXTEND PLATE | | 1 | |
| 98 | SR100700 | HEX SOCKET BOLT | M10x35 | 1 | |
| 100 | IC130471 | EMERGENCY SWITCH CORD | 0.75x2Cx1M | 1 | |
| 101 | LM002004 | EMERGENCY SWITCH LABELING | | 1 | |
| 102 | 994817A | EMERGENCY SWITCH | | 1 | |
| 103 | WS100000 | SPRING WASHER | M10 | 2 | |
| 104 | WF102320 | FLAT WASHER | M10xφ23 | 2 | |
| 105 | SP040610 | PAN HEAD BOLT | M4x30(大扁頭) | 2 | |
| 106 | 130266 | DOOR LATCH SWITCH(ASM) | AZD-S11 | 1 | |
| 107 | WF040808 | FLAT WASHER | M4xφ8 | 2 | |
| 108 | NF040700 | HEX NUT W/FLANGE | M4 | 4 | |
| 109 | SP040200 | PAN HEAD SCREW | M4x10 | 2 | |
| 110 | SF050200 | PAN HEAD BOLT W/FLANGE | M5x10 | 2 | |
| 111 | SR060400 | HEX SOCKET BOLT | M6x20 | 3 | |
| 112 | 135054 | PLASTIC WASHER | φ6xφ13 T=1.5 | 2 | |
| 113 | 130478 | PROTECT COVER | | 1 | |
| 114 | NL050800 | NYLON LOCK HEX NUT | M5 | 2 | |
| 115 | SR089400 | HEX SOCKET BOLT | M8x16 | 1 | |
| 116 | 135073 | STEP SCREW | | 1 | |
| 117 | 135054 | PLASTIC WASHER | φ6xφ13 T=1.5 | 1 | |
| 118 | 130477 | SLIDING PLATE | | 1 | |
| 119 | SH089400 | HEX HEAD BOLT | M8x16 | 1 | |
| 120 | WF102320 | FLAT WASHER | M10xφ23 | 1 | |
| 121 | QF130455 | FENCE SET (ASM) | | 1 | |
| 122 | 130467 | BUSHING | | 1 | |
| 123 | SH100700 | HEX HEAD BOLT | M10x35 | 1 | |
| 124 | WF082030 | FLAT WASHER | M8xφ20 | 1 | |
| 125 | NH081304 | HEX NUT | M8 | 2 | |

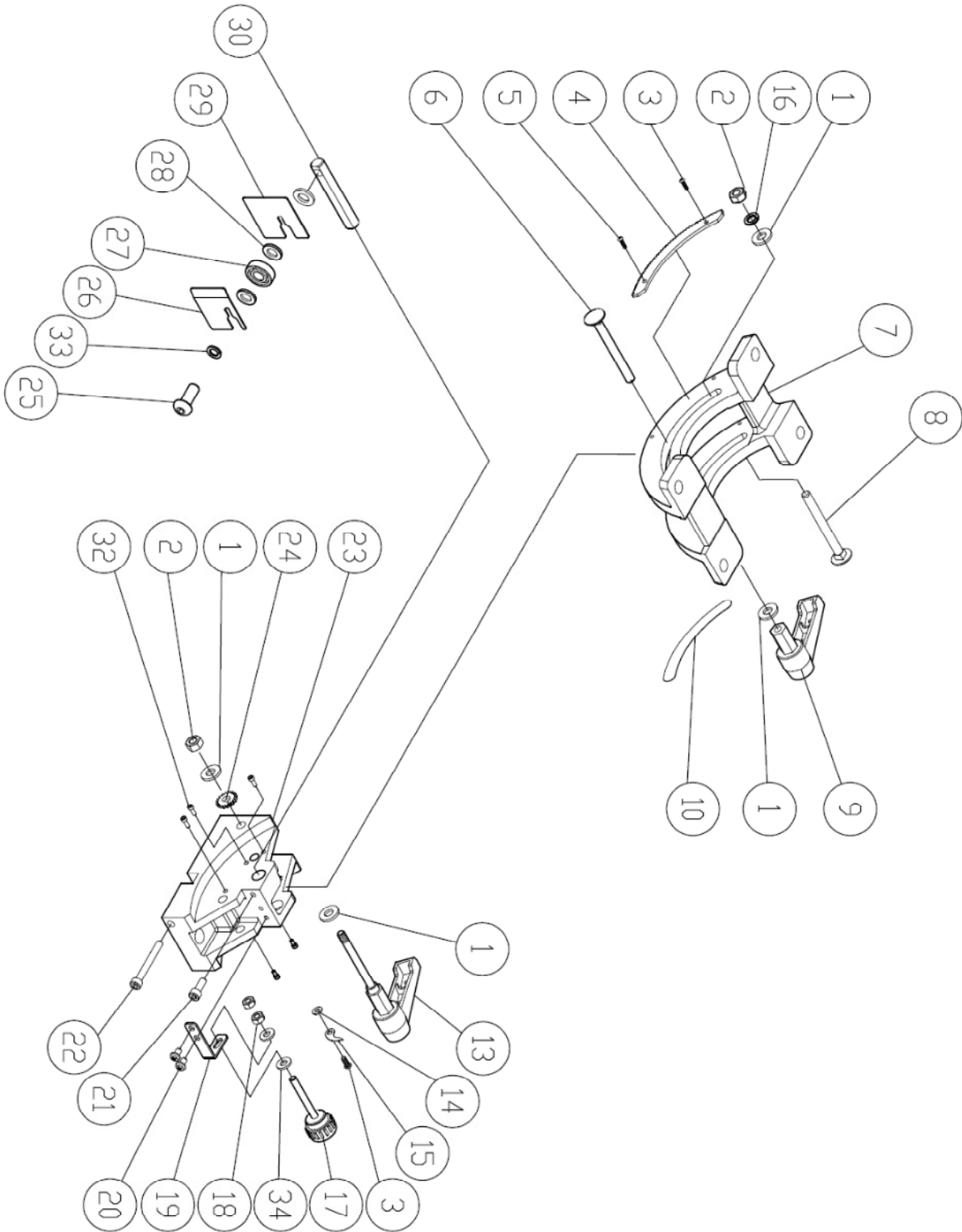
| ITEM | PART NO. | PARTS NAME | SIZE | Q`TY | NOTE |
|------|-----------|-------------------------------|------------------|------|------|
| 126 | 130456 | TABLE | 21-3/4"x16" | 1 | |
| 127 | 135010 | TABLE INSERT | | 1 | |
| 128 | 135517 | QUICK RELEASE HANDLE | | 1 | |
| 129 | SS069300 | SET SCREW | M6x12 | 2 | |
| 130 | IC130470 | POWER CORD | 1.0x3Cx3.1M(SAA) | 1 | 2HP |
| | IC130472 | POWER CORD | 1.5x3Cx2.2M(SAA) | 1 | 3HP |
| 131 | SJ080400 | HEX SOCKET BOTTOM HEAD SCREW | M8x20 | 4 | |
| 132 | WS080000 | SPRING WASHER | M8 | 4 | |
| 133 | AB135530 | GUIDE BRACKET(ASM) | | 1 | |
| 134 | NH081300 | NUT | M8 | 1 | |
| 135 | SR059300 | HEX HEAD BOLT | M5x12 | 2 | |
| 136 | WF051320 | FLAT WASHER | M5xψ12 | 2 | |
| 137 | 130473 | BLADE GUARD COVER | | 1 | |
| 138 | WF081820 | FLAT WASHER | M8xφ18 | 4 | |
| 139 | WS080000 | SPRING WASHER | M8 | 4 | |
| 140 | SH080500 | HEX HEAD BOLT | M8x25 | 4 | |
| 141 | 135006 | HANDLE WHEEL | | 1 | |
| 142 | SR060400 | HEX SOCKET BOLT | M6x20 | 1 | |
| 143 | AB135092B | SAW BLADE ADJUSTMENT(ASM) | | 1SET | |
| 144 | AB135095C | SAW BLADE ADJUSTMENT(ASM) | | 1SET | |
| 145 | AB198101 | MITER GAUGE ASS'Y | | 1SET | |
| 146 | AB135250 | TRUNNION SUPPORT BRACKET(SET) | | 1SET | |
| 147 | WF061620 | FLAT WASHER | M6xψ16 | 2 | |
| 148 | WF081820 | FLAT WASHER | M8xψ18 | 5 | |
| 149 | SR069300 | HEX SOCKET BOLT | M6x12 | 2 | |
| 150 | ST039304 | TAPPING SCREW | M3.5x12(AB) | 4 | 3HP |
| 151 | 136623 | SWITCH LOCATE PLATE | | 1 | 3HP |
| 152 | SS050100 | SET SCREW | M5x5 | 3 | |
| 153 | NL101700 | NYLON LOCK HEX NUT | M10 | 1 | |

MODEL NO. : 14 Inch Band Saw
 PART NO. : AB130455
 FENCE SET



| Item | Part NO | Description | Size | Qty |
|------|----------|------------------------|---------|-----|
| 28 | AC198071 | FENCE(ALL) | 505 | 1 |
| 27 | 198008 | BRACKET | T-3 | 1 |
| 26 | WF061310 | FLAT WASHER | M6x13 | 2 |
| 25 | SF049200 | PAN HEAD BOLR W/FLANGE | M4x8 | 1 |
| 24 | SH060400 | HEX HEAD BOLT | M6x20 | 2 |
| 22 | VS060000 | SPRING WASHER | M6 | 2 |
| 21 | LM001036 | SCALE | | 1 |
| 20 | ST039300 | TAPPING SCREW | M3.5x12 | 2 |
| 18 | 200527 | MOVING PLATE | | 1 |
| 17 | 198014 | GUARD PIECE | | 2 |
| 16 | SF049100 | PAN HEAD BOLR W/FLANGE | M4x6 | 2 |
| 15 | NH081300 | NUT | M8 | 1 |
| 13 | 198004 | FIXED LUMP | | 1 |
| 12 | SR060500 | HEX SOCKET BOLT | M6x25 | 4 |
| 11 | 198007 | CONVEX | | 1 |
| 10 | 136470-1 | NYLON PIECE | | 1 |
| 09 | 198013 | HANDLE | | 1 |
| 08 | WF082320 | FLAT WASHER | M8xø23 | 1 |
| 07 | 130455 | SUPPORT TUBE | | 1 |
| 06 | 130465 | LOCK KNOB | M8x50 | 1 |
| 05 | 198006 | SPRING WASHER | | 1 |
| 04 | 198005 | SHAFT | | 1 |
| 03 | 198003 | FIXED SHAFT | | 2 |
| 02 | 198002 | ADJUST BASE | | 1 |
| 01 | 198018 | FIXED BASE | 640 | 1 |

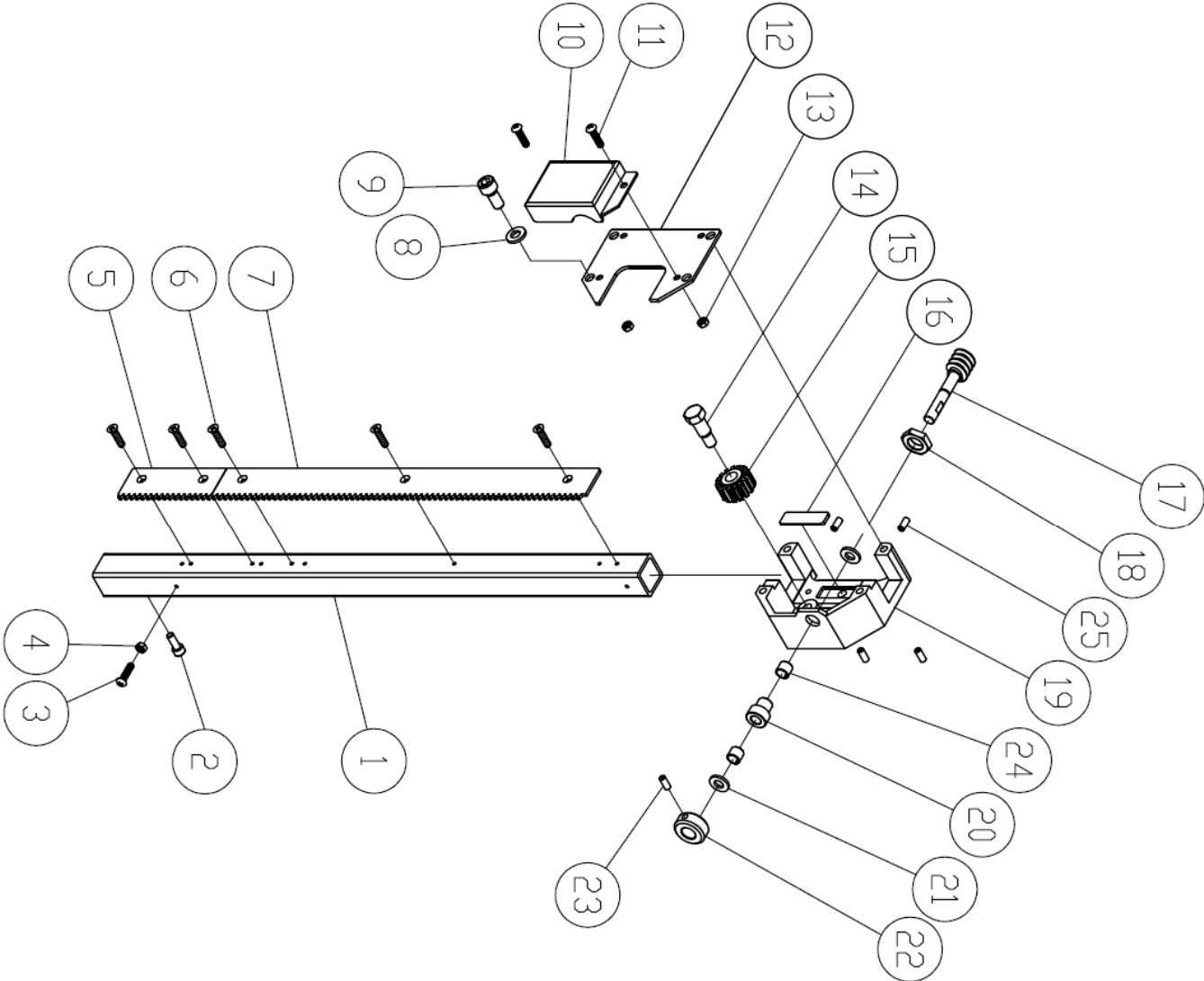
TRUNNION SUPPORT BRACKET ASM (AB135250)



| ITEM | PART NO | PARTS NAME | SIZE | Q'TY | Note |
|------|----------|------------------------------|---------|------|------|
| 1 | WF081820 | FLAT WASHER | M8xφ18 | 4 | |
| 2 | NL081300 | NYLON NUT | M8 | 2 | |
| 3 | SP049100 | PAN HEAD BOLT | M4x6 | 2 | |
| 4 | 135052 | GEAR PLATE | | 1 | |
| 5 | SN049100 | COUNTER SUNK BOLT | M4x6 | 1 | |
| 6 | SC081700 | CARRPIAGE BOLT | M8x85 | 1 | |
| 7 | 135251 | TRUNNION BLOCK | | 1 | |
| 8 | SC081600 | CARRIAGE BOLT | M8x80 | 1 | |
| 9 | 135044 | HANDLE | | 1 | |
| 10 | LM001182 | ANGLE LABEL | | 1 | |
| 13 | 135069 | DISAFFILIATE RAPIDLY | | 1 | |
| 14 | WF040808 | FLAT WASHER | M4xφ8 | 1 | |
| 15 | 135078 | POINTER | | 1 | |
| 16 | WS080000 | SPRING WASHER | M8 | 1 | |
| 17 | 135254 | ADJUST BOLT | M6 | 1 | |
| 18 | NH061000 | NUT | M6 | 2 | |
| 19 | 135253 | ADJUST PLATE | | 1 | |
| 20 | SP059200 | PAN HEAD BOLT W/FLANGE | M5x8 | 2 | |
| 21 | SR069400 | HEX SOCKET BOLT | M6x16 | 1 | |
| 22 | SR061000 | HEX SOCKET BOLT | M6x50 | 1 | |
| 23 | 135250 | TRUNNION SUPPORT BRACKET | | 1 | |
| 24 | 135061 | SMALL GEAR | | 1 | |
| 25 | SJ100600 | HEX SOCKET BOTTON HEAD SCREW | M10x30 | 1 | |
| 26 | 135123 | RIGHT COVER | | 1 | |
| 27 | BB600002 | BALL BEARING | 6000ZZ | 1 | |
| 28 | WF102020 | FLAT WASHER | M10xφ20 | 3 | |
| 29 | 135122 | LEFT COVER | | 1 | |
| 30 | 135252 | ADJUST BLOCK | | 1 | |
| 32 | SR059130 | HEX SOCKET BOLT | M5x6 | 6 | |
| 33 | WS100000 | SPRING WASHER | M10 | 1 | |
| 34 | WF061310 | FLAT WASHER | M6xφ13 | 2 | |

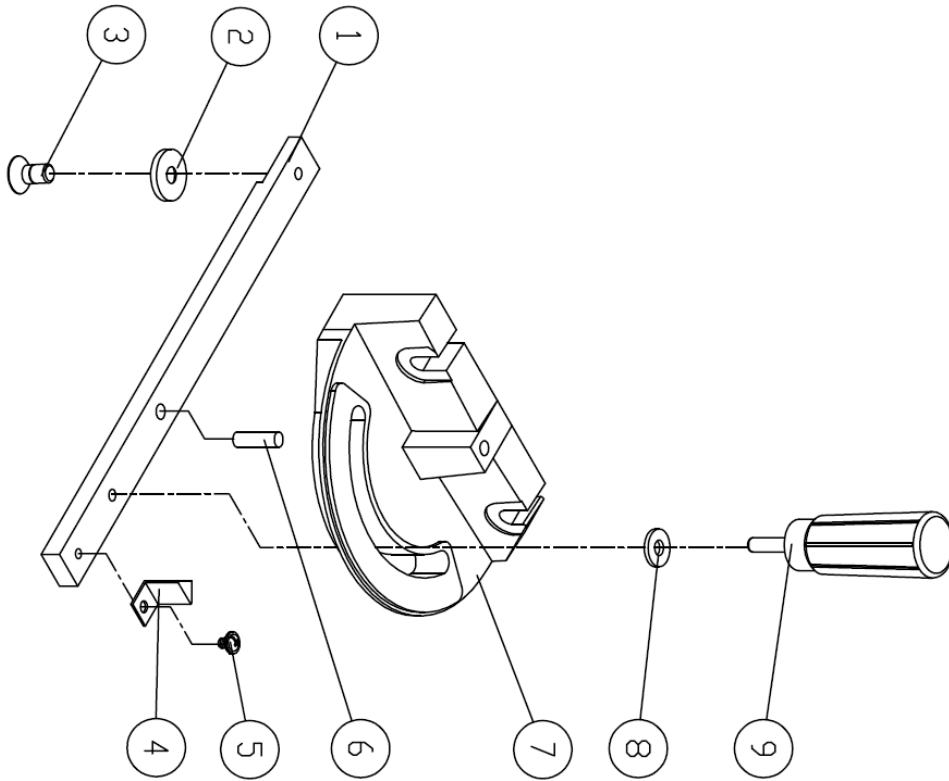
GRUIDE BRACKET ASM

(AB135530)



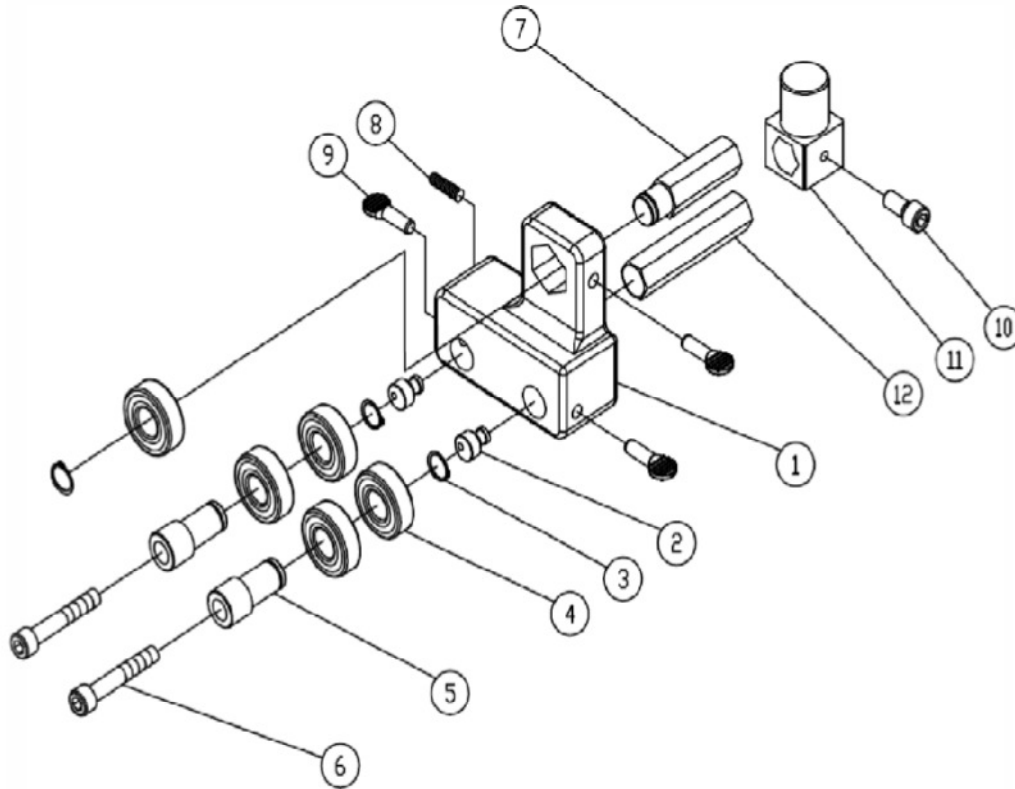
| ITEM | PART NO | PARTS NAME | SIZE | Q'TY | Note |
|------|----------|------------------------|----------|------|------|
| 1 | 135530 | UPPER GUIDE TUBE | | 1 | |
| 2 | SR060200 | HEX SOCKET BOLT | M6x10 | 2 | |
| 3 | SP040200 | PAN HEAD BOLT | M4x10 | 1 | |
| 4 | NH040700 | NUT | M4 | 1 | |
| 5 | 136465 | EXTEND GEAR | | 1 | |
| 6 | SN049200 | COUNTER SUNK BOLT | M4x8 | 5 | |
| 7 | 136466 | RACK | | 1 | |
| 8 | WS080000 | SPRING WASHER | M8 | 4 | |
| 9 | SR089400 | HEX SOCKET BOLT | M8x16 | 4 | |
| 10 | 136469 | COVER | | 1 | |
| 11 | SF050200 | PAN HEAD BOLT W/FLANGE | M5x10 | 2 | |
| 12 | 135046 | COVER | | 1 | |
| 13 | NH050800 | NUT | M5 | 2 | |
| 14 | 016320 | FIXED SCREW | | 1 | |
| 15 | 136484 | GEAR | | 1 | |
| 16 | 135062 | FIXED PLATE | | 1 | |
| 17 | 135033 | WORM CYLINDER | | 1 | |
| 18 | 136473 | NUT | | 1 | |
| 19 | 135050 | GUIDE BRACKET | | 1 | |
| 20 | 136453 | BUSHING | | 1 | |
| 21 | 200069 | FIBER WASHER | | 2 | |
| 22 | 135015 | FIXED BUSHING | | 1 | |
| 23 | SS050100 | SET SCREW | M5x5 | 2 | |
| 24 | BD101201 | BUSHING BRARING | DU 10x12 | 2 | |
| 25 | 990306 | NYLON SET SCREW | M7x10 | 4 | |

MITER GAUGE ASSM (AB198101)



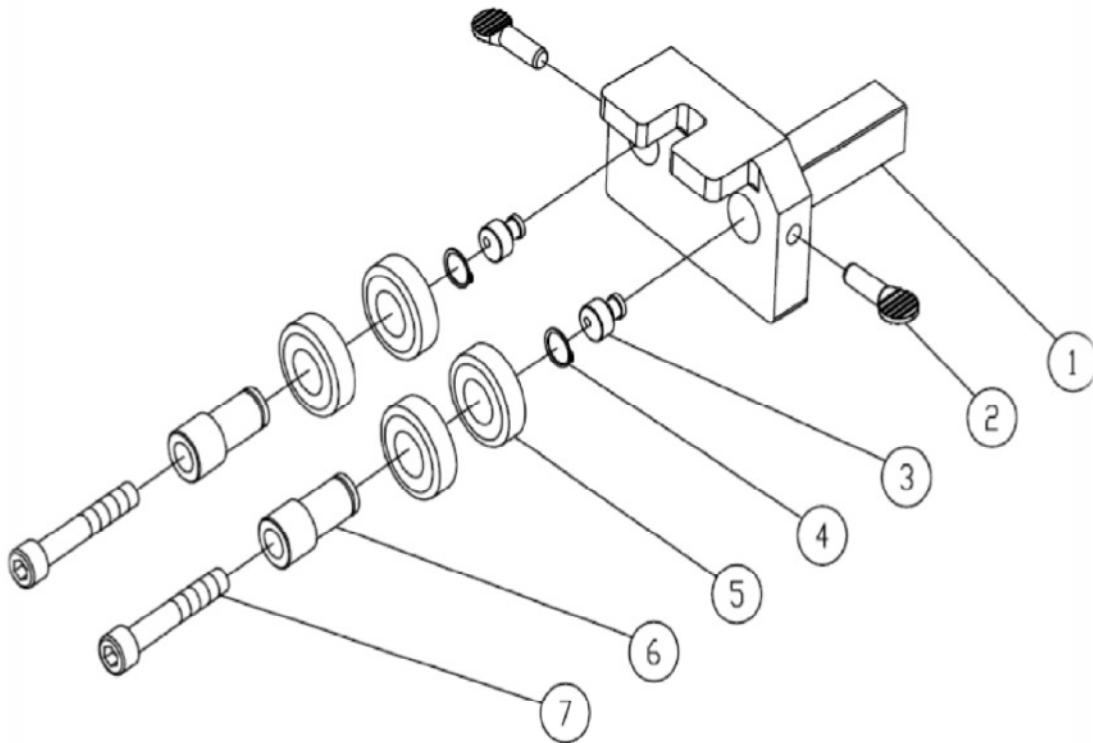
| Item | Part ND | Description | Size | Q'ty |
|------|----------|------------------------|---------|------|
| 09 | 198105 | HANDLE | | 1 |
| 08 | 198104 | NYLON WASHER | | 1 |
| 07 | 198106 | MITER GAUGE BODY | | 1 |
| 06 | 198107 | STEEL PIN | ∅6.5x10 | 1 |
| 05 | SF059200 | PAN HEAD BOLT W/FLANGE | M5x8 | 1 |
| 04 | 198103 | POINTER | | 1 |
| 03 | SN069200 | COUNTER SUNK BOLT | M6x6 | 1 |
| 02 | 198102 | GUIDE PIECE | | 1 |
| 01 | 198101 | GUIDE BAR | | 1 |

SAW BLADE ADJUSTMENT ASM – UPPER
(AB135092B)



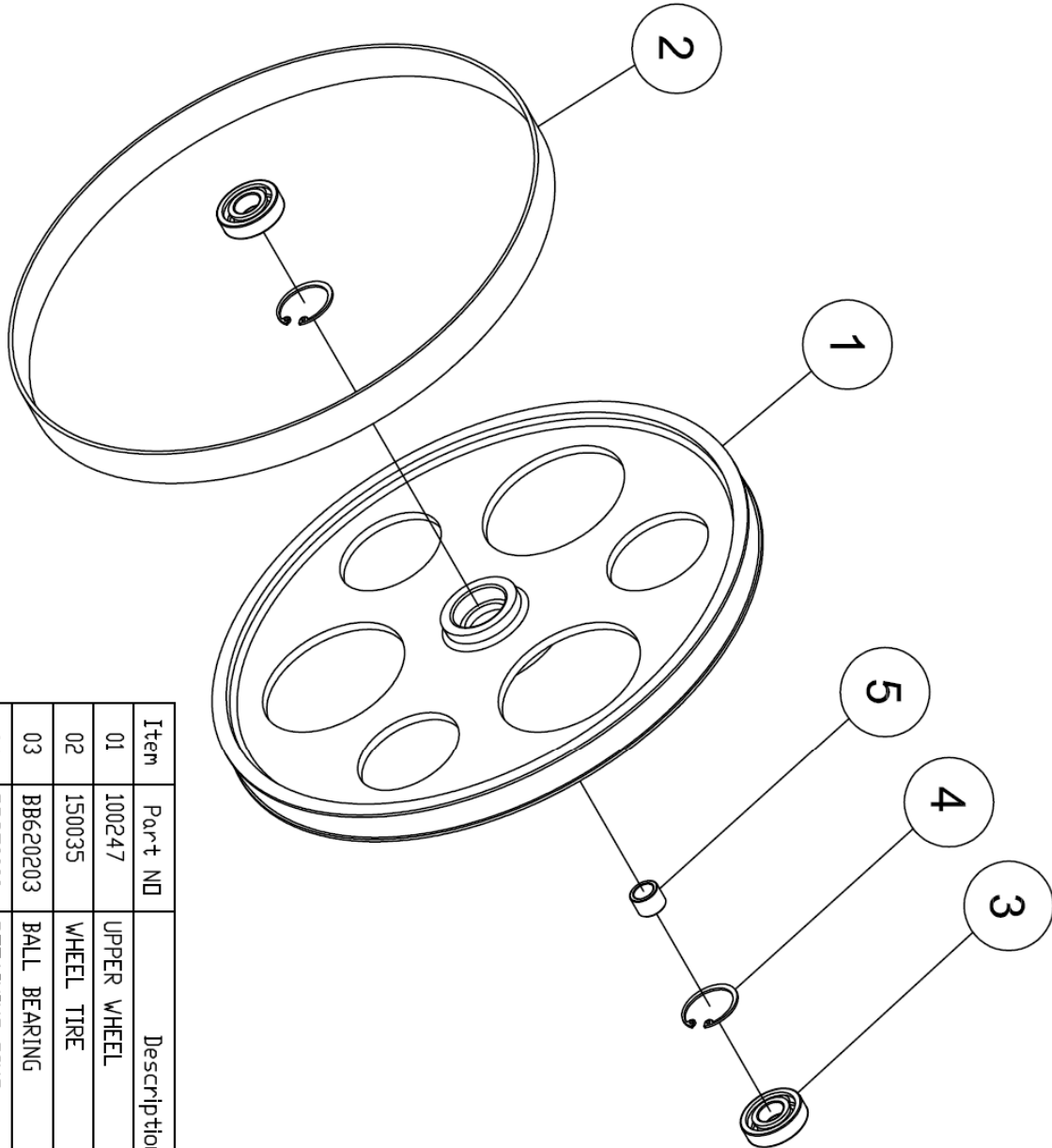
| Item | Part NO | Description | Size | Q'ty |
|------|-----------|---------------------------|--------|------|
| 1 | 135091 | UPPER BLADE GUIDE SUPPORT | | 1 |
| 2 | 135124 | BIAS SHAFT | | 2 |
| 3 | RS150000 | RING | S15 | 3 |
| 4 | BB620202A | BALL BEARING | 6202ZZ | 5 |
| 5 | 136445 | HANDLE BUSHING | | 2 |
| 6 | SR060703 | HEX SOCKET BOLT | M6x35 | 2 |
| 7 | 135060 | UPPER SPACING SLEEVE | | 1 |
| 8 | SS060200 | SET BOLT | M6x10 | 1 |
| 9 | 150013 | THUMB SCREW | M6x16 | 3 |
| 10 | SR069300 | HEX SOCKET BOLT | M6x12 | 1 |
| 11 | 135057 | UPPER GUIDE SUPPORT BLOCK | | 1 |
| 12 | 135053 | ADJUST BAR | | 1 |

SAW BLADE ADJUSTMENT - LOWER (AB135095C)



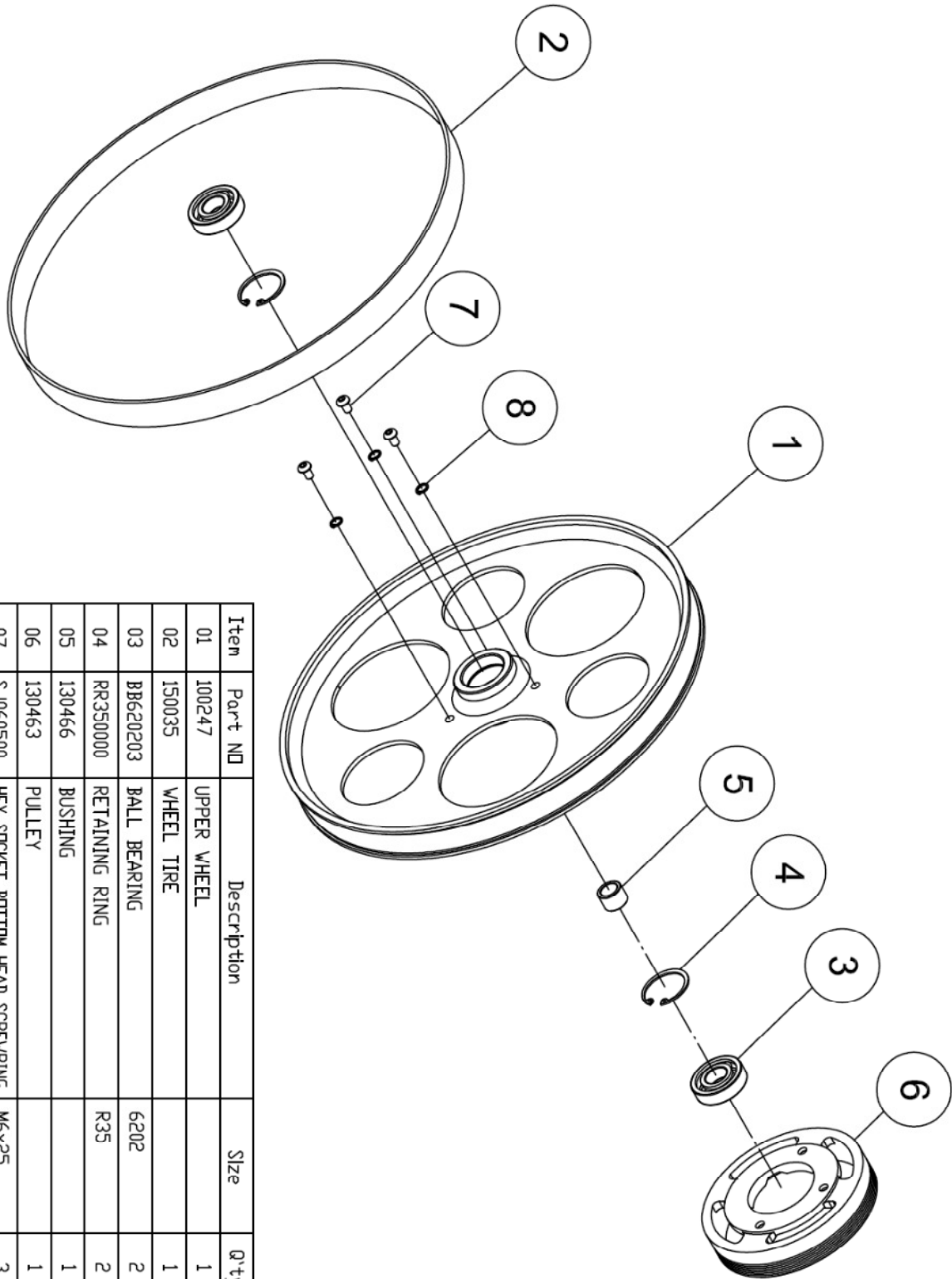
| Item | Part NO | Description | Size | Qty |
|------|-----------|---------------------------|--------|-----|
| 1 | 135125 | LOWER BLADE GUIDE SUPPORT | | 1 |
| 2 | 150013 | THUMB SCREW | M6x16 | 2 |
| 3 | 135124 | BASE SHAFT | | 2 |
| 4 | RS150000 | RETAINING RING | S15 | 2 |
| 5 | BB620202A | BALL BEARING | 6202ZZ | 4 |
| 6 | 136445 | HANDLE BUSHING | | 2 |
| 7 | SR060700 | HEX SOCKET BOLT | M6x35 | 2 |

UPPER WHEEL ASM (AB130466)



| Item | Part ID | Description | Size | Q'ty |
|------|----------|----------------|------|------|
| 01 | 100247 | UPPER WHEEL | | 1 |
| 02 | 150035 | WHEEL TIRE | | 1 |
| 03 | BB620203 | BALL BEARING | 6202 | 2 |
| 04 | RR350000 | RETAINING RING | R35 | 2 |
| 05 | 130466 | BUSHING | | 1 |

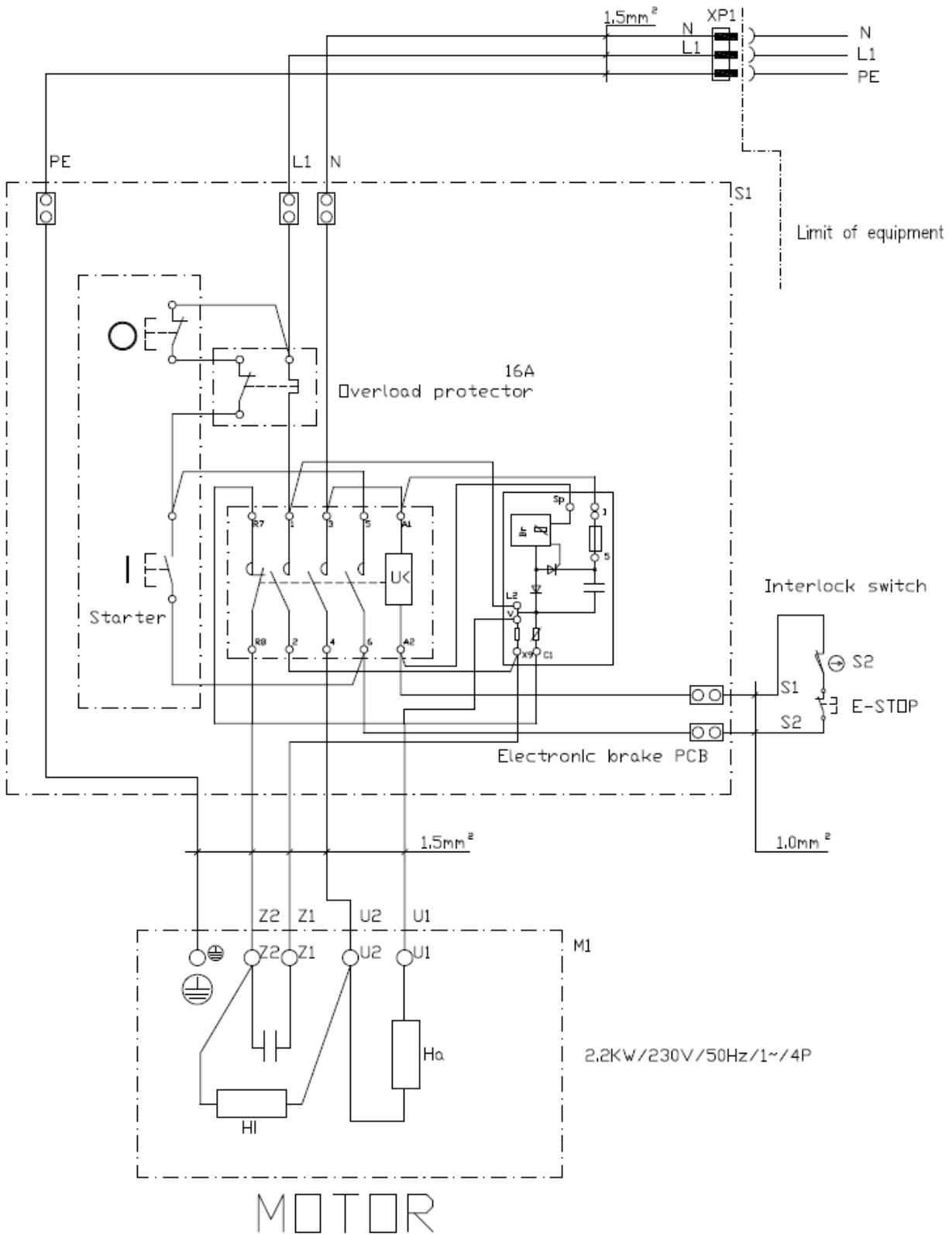
LOWER WHEEL ASM (AB130463)



| Item | Part NO | Description | Size | Q'ty |
|------|----------|-----------------------------------|-------|------|
| 01 | 100247 | UPPER WHEEL | | 1 |
| 02 | 150035 | WHEEL TIRE | | 1 |
| 03 | BB620203 | BALL BEARING | 6202 | 2 |
| 04 | RR350000 | RETAINING RING | R35 | 2 |
| 05 | 130466 | BUSHING | | 1 |
| 06 | 130463 | PULLEY | | 1 |
| 07 | SJ060500 | HEX SOCKET BOTTOM HEAD SCREW/RING | M6x25 | 3 |
| 08 | VS060000 | SPRING WASHER | M6 | 3 |

7. WIRING DIAGRAM

*electrical power supply:
1~ 230V 50Hz





Tools & Machinery

Maxis Distribution Pty Ltd
ABN 93 605 273 989

info@maxis.com.au

Phone: 1300 767 366
International: +61 3292 0392
128 Ingleston Road, Wakerley
Queensland Australia 4154

www.maxis.com.au